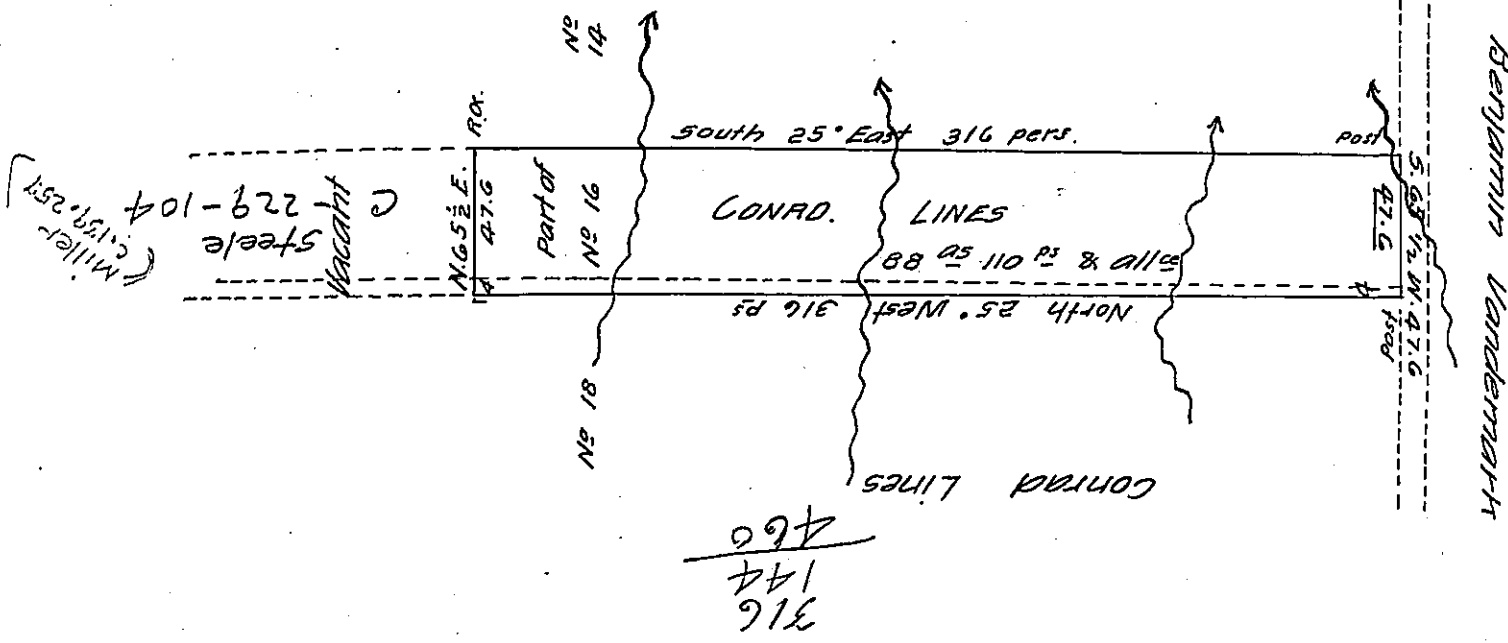


William Nelson

John Treesbach



Draught of a tract of Land situate in Newport one of the 17 Townships, Luzerne County, being part of Lot Number Sixteen in the Second Division of Lots in said Township. Containing Eighty eight acres and one hundred and ten perches of Land besides the usual all^{se} &c. surveyed the above described tract of Land for Conrad Lines the 10th day of April 1821. By Virtue of his Warrant dated the 16th day of March 1821.

John Bennet D. S.

To Jacob Spangler Esq^r }
 Survey Gen^l }

IN TESTIMONY that the above is a copy of the original remaining on file in the Department of Internal Affairs of Pennsylvania, made conformably to an Act of Assembly approved the 16th day of February, 1833, I have hereunto set my Hand and caused the Seal of said Department to be affixed at Harrisburg, this thirtieth day of October 1905

Geo. S. Brown
 Secretary of Internal Affairs.